



# ALL CANNINGS PARISH COUNCIL

WHO WE ARE AND WHAT WE DO

A GRAY

CHAIR OF THE COUNCIL

# OUR PARISH



A village probably existed on the current site in the Vale by the 10th Century - the invading Danes referred to Canning Marsh (probably the area to the north and west of the village, still known as the 'moor') in 1010. The name All Cannings derives from Old Canning.

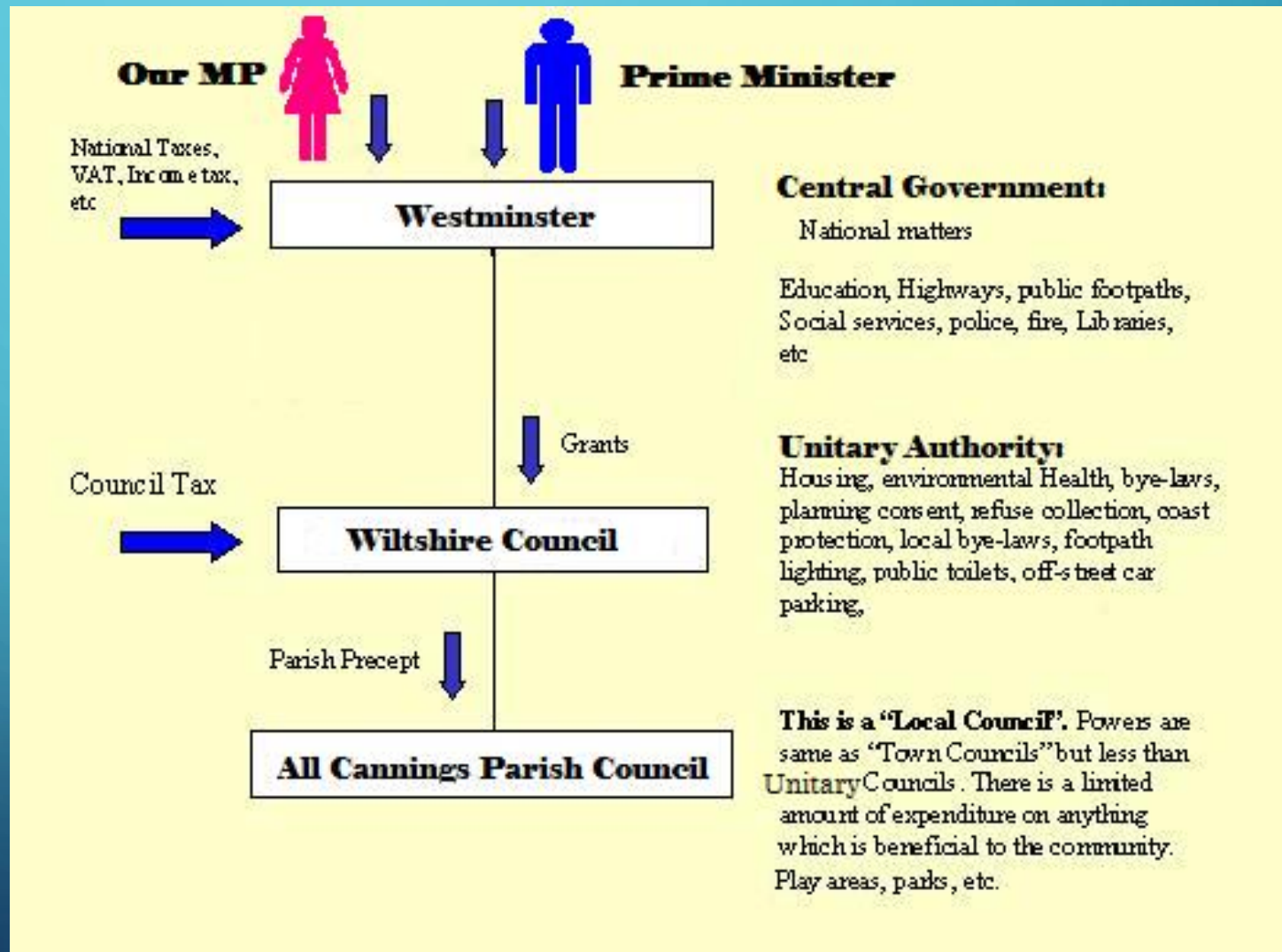
There was a church from the early 13th Century - the earliest features in the current All Saints' church are late Norman. By the 14th Century the village had grown to a considerable size, relative to the area, and there was a significant mill running on the Moor Brook. This had gone by the 18th Century.

The Kennet & Avon Canal (now just a leisure amenity) was built to carry goods between Bristol and London from 1796-1810. It is just north of the village.

Its population peaked around 1841 when the census showed 663 inhabitants. It is only just getting back to that level thanks to recent housing development.

# WHERE WE FIT IN

A parish council can be thought of as the "eyes, ears and voice of its local community", relaying the opinions and views of local people to higher levels of government. Parish councils have tax raising powers and can make bye-laws to improve the governance of their areas.





# WHAT WE DO: THE GREEN & PLAY GROUND



Playground provision, the Green grass cutting, facilities and the Glebe



# CHURCHYARD SAFETY AND GRASS CUTTING



Churchyard maintenance, Graveyard plots and grass cutting

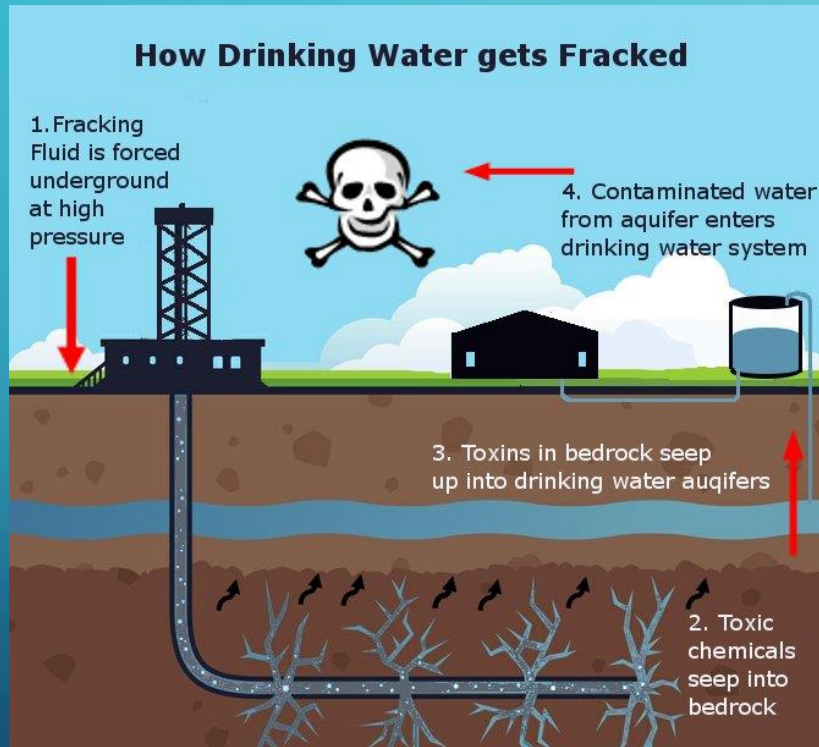


# ADVISE ON LOCAL PLANNING ISSUES



New houses and farm buildings in our Parish

# GET INVOLVED IN LOCAL ISSUES THAT AFFECT US



**Pollution, the Environment, Communications, Transportation, Flooding, Buses**